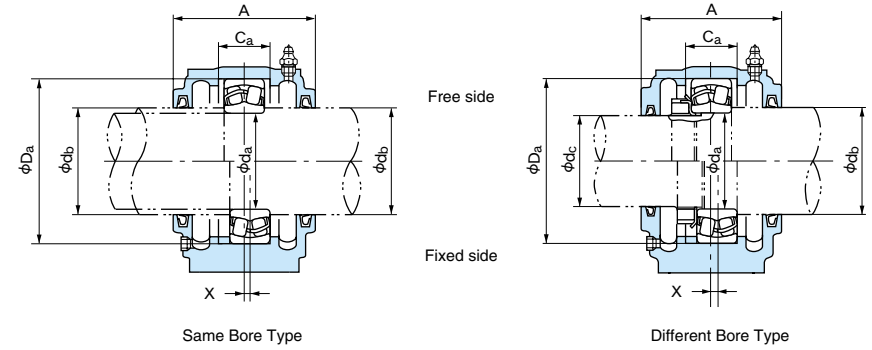
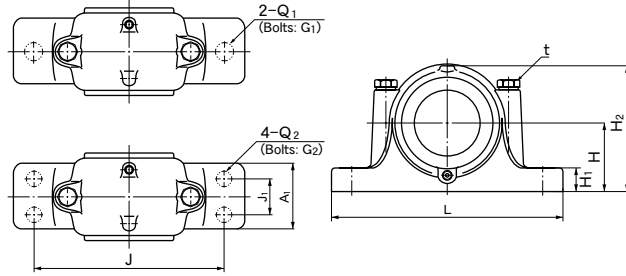


Plummer Block Housings

Flat Bottom Type SN2F, SN3F Series
for Bearing with
Cylindrical Bore

Shaft Diameter : 25 ~ 65mm



1N=0.102kgf

Shaft dia. d _a d _b d _c (mm)	Dimensions (mm)									Bolt holes (Reference)						t (Nominal) (Reference) (Reference)	Mass (kg)	Designations		Applicable parts												
	D _a (H8)	H (h13)	A	L	A ₁	H ₁	H ₂	C _a (H13)	J	Q ₁	G ₁ (Nominal)	J ₁	Q ₂	G ₂ (Nominal)	M			8	M	8	1.7	SN205F	SN205FC	Self-aligning ball bearings	Spherical roller bearings	Nut	Locking washer	Oil seal		Locating ring		Y (Reference)
																												d _b side	d _c side	Designation	Q'ty	
25 30 ⁽¹⁾ 20	52	40	67	165	46	22	75	25	130	15	M12	25	10	M 8	M 8	M 8	M 8	1.7	SN205F	SN205FC	1205	—	AN05	AW05X	GS 7	GS 5	SR52×5	2	17			
	62	50	80	185	52	22	90	34	150	15	M12	25	12	M10	M 8	M 8	2.4	SN305F			SN305FC	2205	22205EX	AN05	AW05X	GS 7	GS 5	SR52×7	1	19		
30 35 ⁽¹⁾ 25	62	50	77	185	52	22	90	30	150	15	M12	25	12	M10	M 8	M 8	2.5	SN206F	SN206FC	1305	21305E	AN05	AW05X	GS 7	GS 5	SR62×8.5	2	18				
	72	50	82	185	52	22	95	37	150	15	M12	25	12	M10	M10	M10	2.5			SN306F	SN306FC	2305	—	AN05	AW05X	GS 7	GS 5	SR62×10	1	22		
35 45 30	72	50	82	185	52	22	95	33	150	15	M12	25	12	M10	M10	M10	2.6	SN207F	SN207FC	1206	—	AN06	AW06X	GS 8	GS 6	SR62×7	2	18				
	80	60	90	205	60	25	110	41	170	15	M12	30	12	M10	M10	M10	3.8			SN307F	SN307FC	2206	22206EX	AN06	AW06X	GS 8	GS 6	SR62×10	1	20		
40 50 35	80	60	85	205	60	25	110	33	170	15	M12	30	12	M10	M10	M10	4.0	SN207F	SN207FC	1306	21306E	AN06	AW06X	GS 8	GS 6	SR72×9	2	19				
	90	60	95	205	60	25	115	43	170	15	M12	30	12	M10	M10	M10	4.0			SN306F	SN306FC	2306	—	AN06	AW06X	GS 8	GS 6	SR72×10	1	23		
45 55 40	85	60	85	205	60	25	112	31	170	15	M12	30	12	M10	M10	M10	4.4	SN207F	SN207FC	1207	—	AN07	AW07X	GS10	GS 7	SR72×8	2	19				
	100	70	105	255	70	28	130	46	210	19	M16	35	15	M12	M12	M12	6.0			SN307F	SN307FC	2207	22207EX	AN07	AW07X	GS10	GS 7	SR72×10	1	22		
50 60 45	90	60	90	205	60	25	115	33	170	15	M12	30	12	M10	M10	M10	4.7	SN208F	SN208FC	1307	21307E	AN07	AW07X	GS10	GS 7	SR80×10	2	21				
	110	70	115	255	70	30	135	50	210	19	M16	35	15	M12	M12	M12	6.5			SN307F	SN307FC	2307	—	AN07	AW07X	GS10	GS 7	SR80×10	1	26		
55 65 50	100	70	95	255	70	28	130	33	170	15	M12	30	12	M10	M10	M10	4.4	SN208F	SN208FC	1208	—	AN08	AW08X	GS11	GS 8	SR80×7.5	2	21				
	120	80	120	275	80	30	150	53	230	19	M16	40	15	M12	M12	M12	8.5			SN308F	SN308FC	2208	22208EX	AN08	AW08X	GS11	GS 8	SR80×10	1	23		
60 70 ⁽¹⁾ 55	120	80	120	275	80	30	150	53	230	19	M16	40	15	M12	M12	M12	8.5	SN209F	SN209FC	1308	21308E	AN08	AW08X	GS11	GS 8	SR90×10	2	23				
	130	80	125	280	80	30	155	56	230	19	M16	40	15	M12	M12	M12	9.0			SN308F	SN308FC	2308	22308EX	AN08	AW08X	GS11	GS 8	SR90×10	1	28		
75 60	120	80	110	275	80	30	150	43	230	19	M16	40	15	M12	M12	M12	7.0	SN209F	SN209FC	1209	—	AN09	AW09X	GS12	GS 9	SR85×6	2	22				
	140	95	130	315	90	32	175	58	260	24	M20	50	19	M16	M16	M16	13			SN309F	SN309FC	2209	22209EX	AN09	AW09X	GS12	GS 9	SR85×8	1	24		
65 75 ⁽¹⁾ 60	120	80	110	275	80	30	150	43	230	19	M16	40	15	M12	M12	M12	7.0	SN210F	SN210FC	1309	21309E	AN09	AW09X	GS12	GS 9	SR100×10.5	2	25				
	140	95	130	315	90	32	175	58	260	24	M20	50	19	M16	M16	M16	13			SN309F	SN309FC	2309	22309EX	AN09	AW09X	GS12	GS 9	SR100×10	1	31		
50 60 45	90	60	90	205	60	25	115	33	170	15	M12	30	12	M10	M10	M10	4.7	SN210F	SN210FC	1210	—	AN10	AW10X	GS13	GS10	SR90×6.5	2	24				
	110	70	115	255	70	30	135	50	210	19	M16	35	15	M12	M12	M12	6.5			SN310F	SN310FC	2210	22210EX	AN10	AW10X	GS13	GS10	SR90×10	1	25		
55 65 50	100	70	95	255	70	28	130	33	170	15	M12	30	12	M10	M10	M10	4.4	SN211F	SN211FC	1310	21310E	AN10	AW10X	GS13	GS10	SR110×11.5	2	27				
	120	80	120	275	80	30	150	53	230	19	M16	40	15	M12	M12	M12	8.5			SN310F	SN310FC	2310	22310EX	AN10	AW10X	GS13	GS10	SR110×10	1	34		
60 70 ⁽¹⁾ 55	120	80	120	275	80	30	150	53	230	19	M16	40	15	M12	M12	M12	8.5	SN211F	SN211FC	1211	—	AN11	AW11X	GS15	GS11	SR100×6	2	25				
	140	95	130	315	90	32	175	58	260	24	M20	50	19	M16	M16	M16	13			SN311F	SN311FC	2211	22211EX	AN11	AW11X	GS15	GS11	SR100×8	1	27		
65 75 ⁽¹⁾ 60	120	80	110	275	80	30	150	43	230	19	M16	40	15	M12	M12	M12	7.0	SN212F	SN212FC	1311	21311E	AN11	AW11X	GS15	GS11	SR120×12	2	29				
	140	95	130	315	90	32	175	58	260	24	M20	50	19	M16	M16	M16	13			SN311F	SN311FC	2311	22311EX	AN11	AW11X	GS15	GS11	SR120×10	1	36		
70 70 ⁽¹⁾ 55	120	80	110	275	80	30	150	43	230	19	M16	40	15	M12	M12	M12	7.0	SN212F	SN212FC	1212	—	AN12	AW12X	GS16	GS12	SR110×8	2	26				
	140	95	130	315	90	32	175	58	260	24	M20	50	19	M16	M16	M16	13			SN312F	SN312FC	2212	22212EX	AN12	AW12X	GS16	GS12	SR110×10	1	29		
75 60	120	80	110	275	80	30	150	43	230	19	M16	40	15	M12	M12	M12	7.0	SN213F	SN213FC	1312	21312E	AN12	AW12X	GS16	GS12	SR130×12.5	2	31				
	140	95	130	315	90	32	175	58	260	24	M20	50	19	M16	M16	M16	13			SN312F	SN312FC	2312	22312EX	AN12	AW12X	GS16	GS12	SR130×10	1	39		
75 60	120	80	110	275	80	30	150	43	230	19	M16	40	15	M12	M12	M12	7.0	SN213F	SN213FC	1213	—	AN13	AW13X	GS17	GS13	SR120×10	2	28				
	140	95	130	315	90	32	175	58	260	24	M20	50	19	M16	M16	M16	13			SN313F	SN313FC	2213	22213EX	AN13	AW13X	GS17	GS13	SR120×12	1	32		
75 60	120	80	110	275	80	30	150	43	230	19	M16	40	15	M12	M12	M12	7.0	SN213F	SN213FC	1313	21313E	AN13	AW13X	GS17	GS13	SR140×12.5	2	33				
	140	95	130	315	90	32	175	58	260	24	M20	50	19	M16	M16	M16	13			SN313F	SN313FC	2313	22313EX	AN13	AW13X	GS17	GS13	SR140×10	1	40		

Note (1): When heavy axial load is applied, a spacer with large O.D. and small inner chamfer must be used between the bearing and shaft shoulder to obtain a sufficient contact area.

Remarks (1): Plummer block housings are housings with oil seals, a plug and a grease nipple. To make a complete unit, please order the corresponding bearing, locating rings and other parts shown in the table additionally.

- (2): The masses in the table do not include the bearing, nut and locating rings but the bolts.
- (3): H8, H13 and h13 in the table means tolerance classes specified in JIS B 0401.
- (4): The tolerance of locating ring O.D. is h12, and 0 ~ -0.2 for the width.

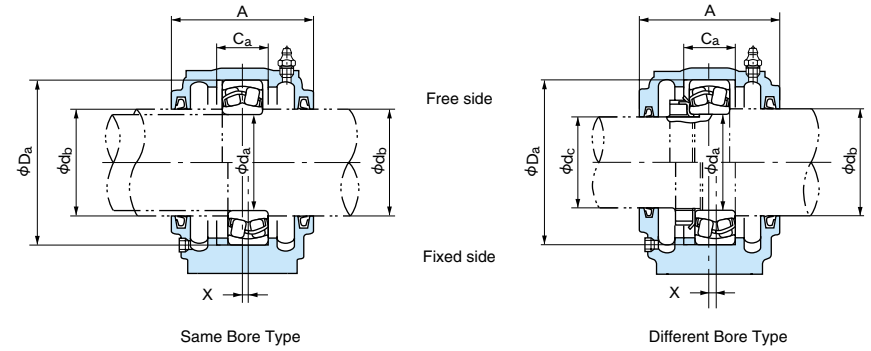
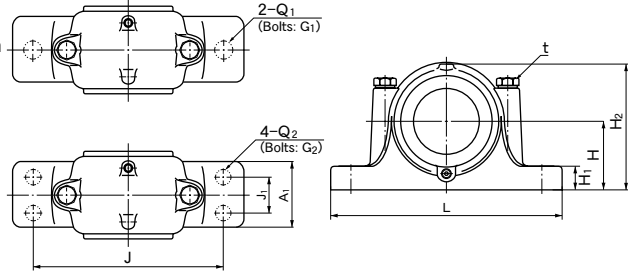
- (5): The threads for plugs are PT1/8. SN205 does not have a drain hole.
- (6): When one locating ring is used for fixed-end, the offset (X dimension) of bearing center from the center of the plummer block housing is a half of the locating ring width.
- (7): ZF type oil seals are also available instead of GS type seals.
- (8): SN--C type housings for different shaft diameters d_b or d_c from the dimensions shown above are also available.
- (9): Please specify number of bolt holes.
- (10): The dimension Y indicates the distance from the bearing center to the outer side face of the nut.

Plummer Block Housings

Flat Bottom Type SN2F, SN3F Series

for Bearing with Cylindrical Bore

Shaft Diameter : 70 ~ 160mm



1N=0.102kgf

Shaft dia. d _a d _b d _c (mm)	Dimensions (mm)								Bolt holes (Reference)						t (Nominal) (Reference)	Mass (kg) (Reference)	Designations		Applicable parts										
	D _a (H8)	H (h13)	A	L	A ₁	H ₁	H ₂	C _a (H13)	J	Q ₁	G ₁ (Nominal)	J ₁	Q ₂	G ₂ (Nominal)			Same Bore Type	Different Bore Type	Self-aligning ball bearings	Spherical roller bearings	Nut	Locking washer	Oil seal		Locating ring		Y (Reference)		
70	80	65	125	80	115	275	80	30	155	44	230	19	M16	40	15	M12	M12	7.6	SN214F	SN214FC	1214 2214	— 22214EX	AN14	AW14X	GS18	GS15	SR125×10 SR125×13	2 1	28 32
	80 ⁽¹⁾	65	150	95	130	320	90	32	185	61	260	24	M20	50	19	M16	M16	15	SN314F	SN314FC	1314 2314	— 22314EX	AN14	AW14X	GS18	GS15	SR150×13 SR150×10	2 1	34 42
75	85	70	130	80	115	280	80	30	155	41	230	19	M16	40	15	M12	M12	8.8	SN215F	SN215FC	1215 2215	— 22215EX	AN15	AW15X	GS19	GS16	SR130×8 SR130×10	2 1	30 33
	85 ⁽¹⁾	70	160	100	140	345	100	35	195	65	290	24	M20	50	19	M16	M16	16	SN315F	SN315FC	1315 2315	— 22315EX	AN15	AW15X	GS19	GS16	SR160×14 SR160×10	2 1	36 45
80	90	75	140	95	120	315	90	32	175	43	260	24	M20	50	19	M16	M16	13	SN216F	SN216FC	1216 2216	— 22216EX	AN16	AW16X	GS20	GS17	SR140×8.5 SR140×10	2 1	32 36
	90 ⁽¹⁾	75	170	112	145	345	100	35	212	68	290	24	M20	50	19	M16	M16	17	SN316F	SN316FC	1316 2316	— 22316EX	AN16	AW16X	GS20	GS17	SR170×14.5 SR170×10	2 1	39 48
85	95	80	150	95	125	320	90	32	185	46	260	24	M20	50	19	M16	M16	14	SN217F	SN217FC	1217 2217	— 22217EX	AN17	AW17X	GS21	GS18	SR150×9 SR150×10	2 1	34 38
	95 ⁽¹⁾	80	180	112	155	380	110	40	223	70	320	28	M24	60	24	M20	M20	24	SN317F	SN317FC	1317 2317	— 22317EX	AN17	AW17X	GS21	GS18	SR180×14.5 SR180×10	2 1	41 50
90	100	85	160	100	145	345	100	35	195	62.4	290	24	M20	50	19	M16	M16	18	SN218F	SN218FC	1218 2218	— 22218EX 23218E	AN18	AW18X	GS22	GS19	SR160×16.2 SR160×11.2 SR160×10	2 2 1	35 40 46
95	110	90	170	112	140	345	100	35	210	53	290	24	M20	50	19	M16	M16	20	SN219F	SN219FC	1219 2219	— 22219EX	AN19	AW19X	GS24	GS20	SR170×10.5 SR170×10	2 1	37 43
100	115	95	180	112	160	380	110	40	218	70.3	320	28	M24	60	24	M20	M20	26	SN220F	SN220FC	1220 2220	— 22220EX 23220E	AN20	AW20X	GS26	GS21	SR180×18.1 SR180×12.1 SR180×10	2 2 1	39 45 52
110	125	105	200	125	175	410	120	45	240	80	350	28	M24	70	24	M20	M20	28	SN222F	SN222FC	1222 2222	— 22222EX 23222E	AN22	AW22X	GS28	GS23	SR200×21 SR200×13.5 SR200×10	2 2 1	42 50 58
120	135	115	215	140	185	410	120	45	270	86	350	28	M24	70	24	M20	M20	35	SN224F	SN224FC	—	22224EX 23224E	AN24	AW24X	GS30	GS26	SR215×14 SR215×10	2 1	53 62
130	145	125	230	150	190	445	130	50	290	90	380	28	M24	70	28	M24	M24	42	SN226F	SN226FC	—	22226EX 23226E	AN26	AW26	GS33	GS28	SR230×13 SR230×10	2 1	57 65
140	155	135	250	150	205	500	150	50	305	98	420	35	M30	80	28	M24	M24	52	SN228F	SN228FC	—	22228EX 23228E	AN28	AW28	GS35	GS30	SR250×15 SR250×10	2 1	60 70
150	165	145	270	160	220	530	160	60	325	106	450	35	M30	90	28	M24	M24	61	SN230F	SN230FC	—	22230E 23230E	AN30	AW30	GS37	GS33	SR270×16.5 SR270×10	2 1	65 76
160	175	150	290	170	235	550	160	60	345	114	470	35	M30	90	28	M24	M24	68	SN232F	SN232FC	—	22232E 23232E	AN32	AW32	GS39	GS34	SR290×17 SR290×10	2 1	71 83

Note (1): When heavy axial load is applied, a spacer with large O.D. and small inner chamfer must be used between the bearing and shaft shoulder to obtain a sufficient contact area.
 Remarks (1): Plummer block housings are housings with oil seals, a plug and a grease nipple only. To make a complete unit, please order the corresponding bearing, locating rings and other parts shown in the table additionally.
 (2): The masses in the table do not include the bearing, nut and locating rings but the bolts.
 (3): H8, H13 and h13 in the table means tolerance classes specified in JIS B 0401.
 (4): The tolerance of locating ring O.D. is h12, and 0 ~ -0.2 for the width.

(5): Plummer block housings SN224 and larger are provided with eye bolts.
 (6): The threads for plugs are PT1/8 for SN316 and smaller, and PT1/4 for the others.
 (7): When one locating ring is used for fixed-end, the offset (X dimension) of bearing center from the center of the plummer block housing is a half of the locating ring width.
 (8): ZF type oil seals are also available instead of GS type seals.
 (9): SN--C type housings for different shaft diameters d_b or d_c from the dimensions shown above are also available.
 (10): Please specify number of bolt holes.
 (11): The dimension Y indicates the distance from the bearing center to the outer side face of the nut.