

For injection molding machine parts for high-grade plastics

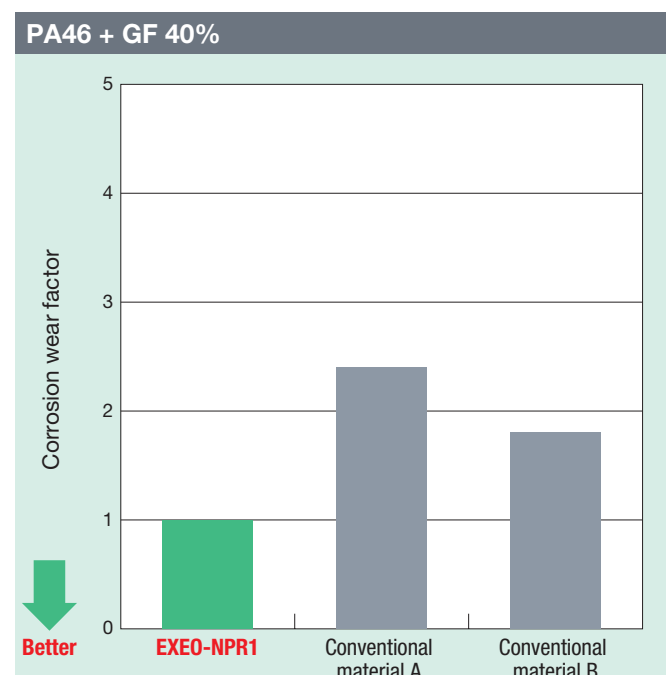
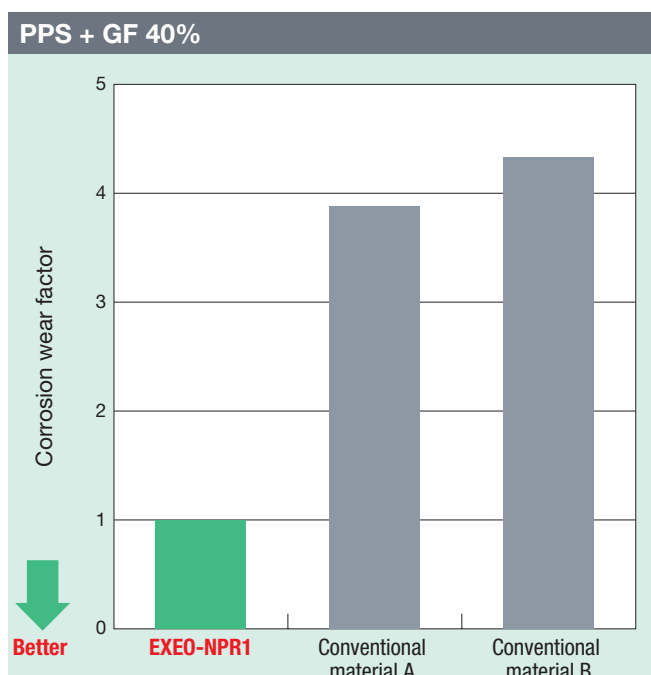
EXEO-NPR1

NACHI developed the EXEO series alloys in company-wide combined and connected engineering system by first analyzing and determining necessary characteristics and then applying Nachi original alloy design and special melting technologies. EXEO-NPR1 is the best material for injection molding machine parts such as screws used for molding high-grade plastics.

- Joint development with an university analyzed the basic mechanism of corrosion by using a new method to evaluate corrosive wear by plastics.
- FM Alloy production facilities and alloy design technologies make superior resistance to corrosive wear as plastics injection molding machine parts.
- Proprietary heat treatment technologies give the products the very best heat treatment quality.



Evaluations of corrosion wear by plastics



The Nachi evaluation of corrosion wear by plastic is available for many kinds of plastics. Please contact us for further information.

Corrosion wear examples

Corrosion wear by an engineering plastic [PA6T + GF 50%]

Pictures of screw surface after 600,000 injection shots



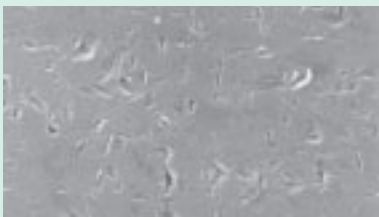
EXEO-NPR1



NACHI's conventional wear-corrosion resistant grade

Roughness caused by corrosion wear is observed on surface of screw.

Electron microscope images of material surface after Nachi evaluation of corrosion wear by plastic



EXEO-NPR1

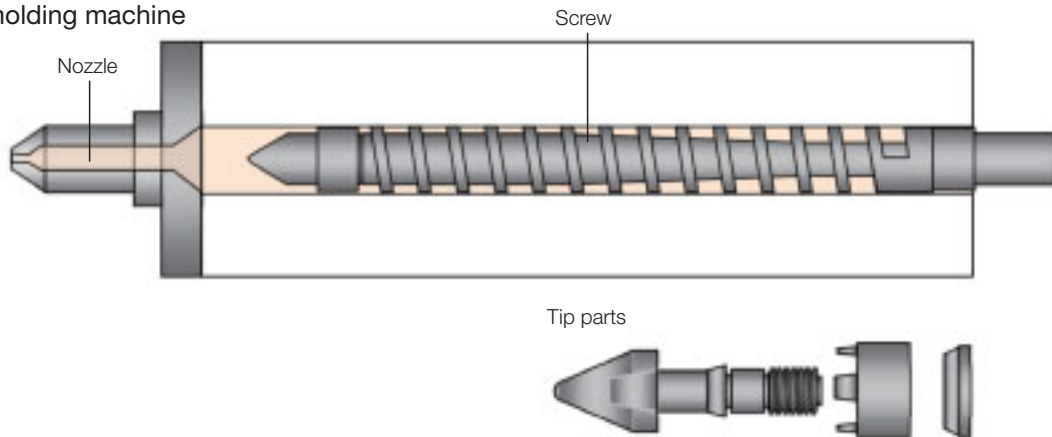


NACHI's conventional wear-corrosion resistant grade

Roughness caused by corrosion wear is observed same as screw.

Applications

Parts of injection molding machine



Applicable plastics		Reinforcement		Other composites	
PA12, PA46, PA6, PA66	PP•PS•POM	Glass-fiber reinforcement	Magnetic plastic	Flame and oxidation resistance	Gassing
PA6T, PPS, PBT, LCP	PHENOL	Carbon-fiber reinforcement	Others	Weather resistance	Others
PEEK, POM, PC		Nano-composite		Mold release and lubricant	

Unauthorized reproduction of these materials is prohibited.

- Information in this catalog may be changed without prior notice due to technical advancements or product developments. While care has been taken to produce these materials, NACHI Fujikoshi accepts no responsibility for damages caused by misprints or omissions that may occur during the publication of this catalog.
- Please note that the characteristics and values provided here are typical examples which may differ from the characteristics of the actual product.

NACHI-FUJIKOSHI CORP.

Tokyo Head Office

Shiodome Sumitomo Bldg. 17F 1-9-2 Higashi-shinbashi, Minato-ku, Tokyo 105-0021, JAPAN Tel: +81-(0)3-5568-5111 Fax: +81-(0)3-5568-5206
URL: <http://www.nachi-fujikoshi.co.jp> E-mail: webmaster@nachi-fujikoshi.co.jp

Toyama Head Office

1-1-1 Fujikoshi-Honmachi, Toyama 930-8511, JAPAN Tel: +81-(0)76-423-5111 Fax: +81-(0)76-493-5211

Higashi-Toyama Plant

3-1-1 Yoneda-machi, Toyama 931-8511, JAPAN Tel: +81-(0)76-438-4411 Fax: +81-(0)76-438-6313

Eastern Japan Main Branch

Shiodome Sumitomo Bldg. 17F 1-9-2 Higashi-shinbashi, Minato-ku, Tokyo 105-0021, JAPAN Tel: +81-(0)3-5568-5242 Fax: +81-(0)3-5568-5292

NACHI AMERICA INC.

17500 Twenty-Three Mile Road, Macomb, Michigan, 48044, U.S.A. Tel: +1-586-226-5151 Fax: +1-888-383-8665 URL: <http://www.nachiamerica.com/>

NACHI EUROPE GmbH

Bischofstrasse 99, 47809, Krefeld, GERMANY Tel: +49-(0)2151-65046-0 Fax: +49-(0)2151-65046-90 URL: <http://www.nachi.de/>

CATALOG NO.

S4307E